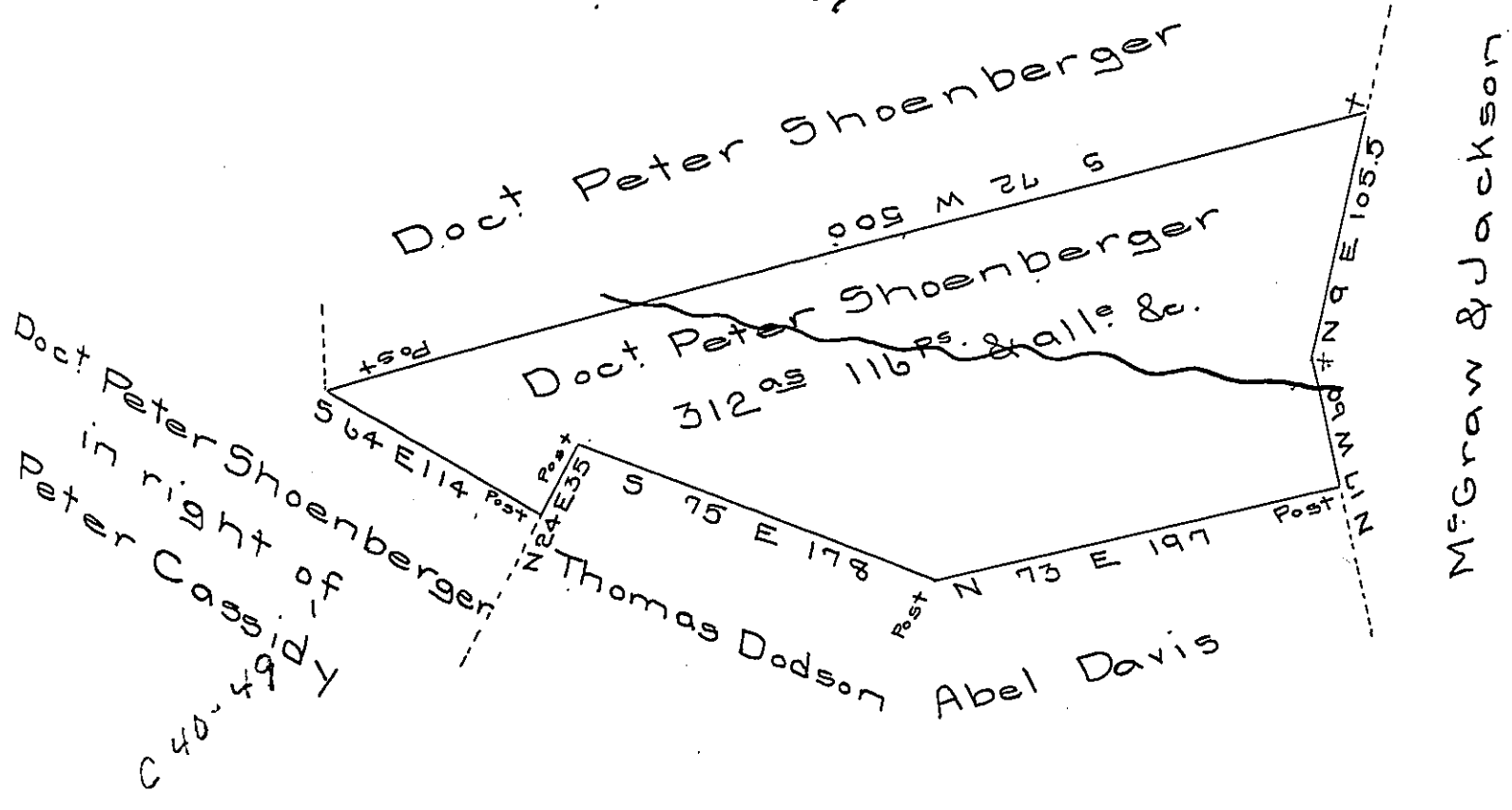


pg 242



Situate in Greenfield township Bedford County containing three hundred and twelve acres one hundred and sixteen perches and allowance of six per cent for roads & surveyed in 1800 in pursuance of an improvement made by Henry Roubesh the heirs of whom sold the same to the said Doct Peter Shoenberger; And resurveyed the 10<sup>th</sup> day of August 1841 in pursuance of a warrant dated the 30<sup>th</sup> day of May 1840 granted to the said Peter Shoenberger for 300 acres (Endorsed on the outside for 350 acres

To Jacob Gallade Esqr S.G. Michael Reed D.S.

N.B. There is an old improvement and actual settlement on the above tract of land and about 100 acres cleared. Michael Reed D.S.

IN TESTIMONY that the above is a copy of the original remaining on file in the Department of Internal Affairs of Pennsylvania, made conformably to an Act of Assembly approved the 16th day of February 1833, I have hereunto set my hand and caused the Seal of said Department to be affixed at Harrisburg, this second day of April 1907.

*Isaac J. Brown*  
 Secretary of Internal Affairs.